



ORIENTEERING WORLD CUP
FINAL 2019
(GUANGDONG, CHINA)

2019.10.24-30

Bulletin 2 – **Supplementary Information**

This is a supplementary document for Bulletin 2 including revised schedule, entry fee for early birds, free quota of participation and event information for Open Class.

Schedule

City	Date	Time	Activity	Location	
Nanhai District, Foshan City	24/10/2019 Thursday	All Day	Arrival	Guangzhou Baiyun International Airport – Xi-qiao Town, Nanhai District	
	25/10/2019 Friday	All Day	Model Event	Nanhai District, Foshan City	
		Evening	Opening Ceremony	Nanhai District, Foshan City	
	26/10/2019 Saturday	Morning	Break	Nanhai District, Foshan City	
		Afternoon	Middle Distance (World Cup)		Flower Ceremony
	27/10/2019 Sunday	Morning	Break	Nanhai District, Foshan City	
		Afternoon	Sprint Relay (World Cup)		Flower Ceremony
	28/10/2019 Monday	Rest Day (IOF Council Meeting)			
	29/10/2019 Tuesday	Morning	Break	Nanhai District, Foshan City	
		Afternoon	Sprint (World Cup)		Flower Ceremony
		Evening	Awarding Ceremony		
	30/10/2019 Wednesday	Morning	Departure		

Classes and Entries

- There is one class for men and one class for women. There are no age restrictions.
- Each competitor represents a Federation. The maximum number of competitors from each Federation is defined in the 2019 World Cup Special Rules.
- A competitor may represent only one Federation during any one calendar year.
- Competitors who are representing a Federation shall have full passport-holding citizenship of the country of that Federation.

1. Entries for Athletes and Team Officials

- Entries via IOF Eventor.
- The entry form will be available on IOF Eventor from June 1 to August 31, 2019.
- The deadline is August 31, 2019. Entries shall be completed by the national team manager.

2. Team Size Entry

- The following information shall be filled via IOF Eventor:
 - Team manager (Chosen from list in IOF Eventor)
 - Number of Team athletes (Men and Women)
 - Number of Team coaches
 - Number of Teams for the Relay(s)
- The deadline for Team Size Entry is August 31, 2019

3. Team Names Entry

- The following information shall be filled via IOF Eventor:
 - Name of each Team athlete by selecting from federation members in IOF Eventor
- The deadline for Team Names Entry is September 15, 2019

4. Late Entries, Changes of Team Size or Team Names

Late Entries and changes will be accepted by October 5, 2019. No late entries or changes will be accepted after that date. Late entries and changes will always have a defined extra cost (surcharge). Late entries and changes will always be treated equally and must be communicated directly to the Organizer. The change request must be sent to worldcupvisa@126.com, and the Organizer will make the changes in IOF Eventor after deadlines.

Entry Fee

Middle Distance: € 50/athlete
Sprint Relay: € 200/team
Sprint: € 50/athlete
Accreditation for officials: € 40/person

Package price of entry fee for early birds € 100/athlete for all 3 races can be offered if entries are made before August 31, 2019.

20% additional fee will be charged if entries are made between September 1 and September 30, 2019. If participants withdraw from the event in this period, 80% of the entry fee can be refunded.

50% additional fee will be charged if entries are made between October 1 and 15, 2019. If participants withdraw from the event in this period, 50% of the entry fee can be refunded. Changes of team members will be charged of € 10/athlete/race.

Free Quota of Participation

In order to encourage more countries to get involved in the World Cup, the Organizer will waive the expenses of 1 man athlete and 1 woman athlete of each participating national team, including entry fee, full board accommodation and local transportation.

Payment

Beneficiary Account Name: Foshan MeiMei cultural communication co.,LTD

Bank Account: 2013 0968 1920 0142 011

Bank: INDUSTRIAL AND COMMERCIAL BANK OF CHINA GUANGDONG FOSHAN BRANCH

Swift Code: ICBKCNBJFSN

Bank Address: No.23 HUJING ROAD CHANCHENG FOSHAN GUANGDONG CHINA

Liaison staffs for payment confirmation:

English Speaking - Ms. Guan Ruiying

Mobil: +86 13827776663; Email: 2484969867@qq.com.

Mr. Shi Yuxian

Mobil: +86 13760962940

Chinese Speaking - Ms. Wu Huiyi

Mobil: +86 13923136680; Email: 529570353@qq.com.

Note: Bank charges will be fully paid by payment sender.

Important: The entry submission is confirmed after the payment is received. Unless entry fee is paid, the entry is not valid. The payment for entries shall reach the Organizer's bank account no later than October 15, 2019.

Open Class

The Open Class will be held on the same dates as the World Cup - an event with participation of the best orienteering athletes all around the world. When you take part in the open class event, you can not only enjoy the competition, but also cheer for the elite runners as an orienteering fan.

Date:

Saturday, October 26, Middle Distance

Sunday, October 27, Sprint #1

Tuesday, October 29, Sprint #2

Note: Middle Distance is exclusively for M21E and W21E.

Entry Method:

Please fill in the entry form and send it to htochina@yahoo.com.

Deadline: September 30, 2019

No entry will be accepted after the deadline.

Entry Fee:

Middle Distance: € 15/person/race

Sprint #1: € 15/person/race

Sprint #2: € 15/person/race

Package Price for all 3 races: € 40/person

Number of Participants:

- The number of participants for open class has the limitation of 200 people. First come, first serve.
- The number of participants for M21E/W21E Middle Distance has the limitation of 25 runners. (In accordance with the IOF ranking, 25 M21E/W21E athletes will be selected from all foreign athletes registered for open class. Those who made entries for M/W21E but not selected will be put into M/W21A.)

Classes:

M8: born after January 1, 2011
W8: born after January 1, 2011
M10: born after January 1, 2009
W10: born after January 1, 2009
M12: born after January 1, 2007
W12: born after January 1, 2007
M14: born after January 1, 2005
W14: born after January 1, 2005
M16: born after January 1, 2003
W16: born after January 1, 2003
M18: born after January 1, 2001
W18: born after January 1, 2001
M21A: no age restrictions
W21A: no age restrictions
M21E: elite class, no age restrictions
W21E: elite class, no age restrictions
M35: born before December 31, 1984
W35: born before December 31, 1984
M40: born before December 31, 1979
W40: born before December 31, 1979
M45: born before December 31, 1974
W45: born before December 31, 1974
M50: born before December 31, 1969
W50: born before December 31, 1969

Note: Groups may be divided numerically into Group 1 & Group 2 when many participants enter in the same class, e.g.: M21A-1 & M21A-2.

Payment for Open Class:

Beneficiary Account Name: Foshan Last Minute International Tourist Co., Ltd

Bank Account: 2013 0199 0920 0085 424

Bank: INDUSTRIAL & COMMERCIAL BANK OF CHINA GUANGDONG NANHAI SUB-BRANCH

Swift Code: ICBKCNBJGDG

Bank Address: 73 NORTH NANHAI AVE, NANHAI FOSHAN GUANGDONG CHINA

Liaison staffs for payment confirmation:

English Speaking - Ms. Guan Ruiying

Mobil: +86 13827776663; Email: 2484969867@qq.com.

Chinese Speaking - Ms. Wu Huiyi

Mobil: +86 13923136680; Email: 529570353@qq.com.

Note: Bank charges will be fully paid by payment sender.

Important: The entry submission is confirmed after the payment is received. Unless entry fee is paid, the entry is not valid. The payment for entries shall reach the Organizer's bank account no later than October 1, 2019. **Remittance information including team name and number of participants should be sent while the payment is made.**

Start Time:

Open Class event will start in accordance with the start order choreographed by the Organizer after the start of the World Cup athletes. World Cup Middle Distance on Saturday will start at ca 1 pm while World Cup Sprint Relay on Sunday will start at ca 2:45 pm and World Cup Sprint on Tuesday will start at ca 2 pm.

Punching System:

The punching system used is SPORTident.

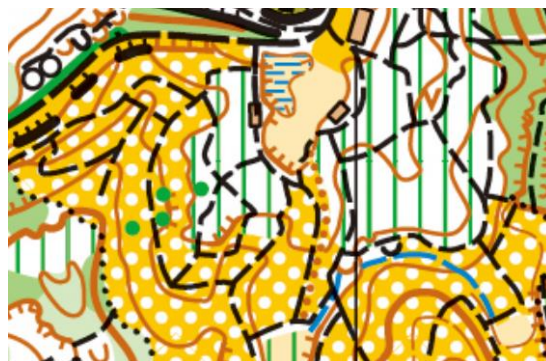
Open Class Races:

Middle distance

Date: Saturday, October 26

Terrain: The terrain is on a mountain plateau with generally moderate slopes. Mostly native forest, with some areas of villages and developed parklands. There is a wide variation in vegetation but most forest areas have good runnability. There is a dense path network.

Map: scale 1:10000, contour interval 5 m, ISOM 2017



Sprint #1

Date: Sunday, October 27

Terrain: Located here is an open-air film studio complex with numerous replica townscape and temples, combining the landscape of a city park and suburban park with strong cultural atmosphere. There is both planted and natural vegetation. Very good runnability.

Map: scale 1:4000, contour interval 2 m, ISSOM 2007



Sprint #2

Date: Tuesday, October 29

Terrain: Ancient villages with both traditional and modern architectural styles, with areas of farmland and ponds between the built-up areas. The alleys are quite narrow, mainly made of bricks. The terrain is generally fairly flat.

Map: scale 1:4000, contour interval 2.5 m, ISSOM 2007 Course Planning

